

- NOTES:**
1. 2x6 SPF#2 EXT. WALLS @ 16" O.C. / 2x4 SPF#2 MARR. WALLS
  2. 8'-0" CLG HT.
  3. 2x10 SPF#2 FLOORJOISTS @ 16" O.C.
  4. MW DOUBLE HUNG WINDOWS (NFRC CERTIFIED)

**ProBuilt Homes**

20 INDUSTRIAL CIRCLE, MILFINTOWN, PA 17059  
PHONE # (717) 436 - 6434 / FAX # (717) 436 - 6431

**COPYRIGHT © 2003**

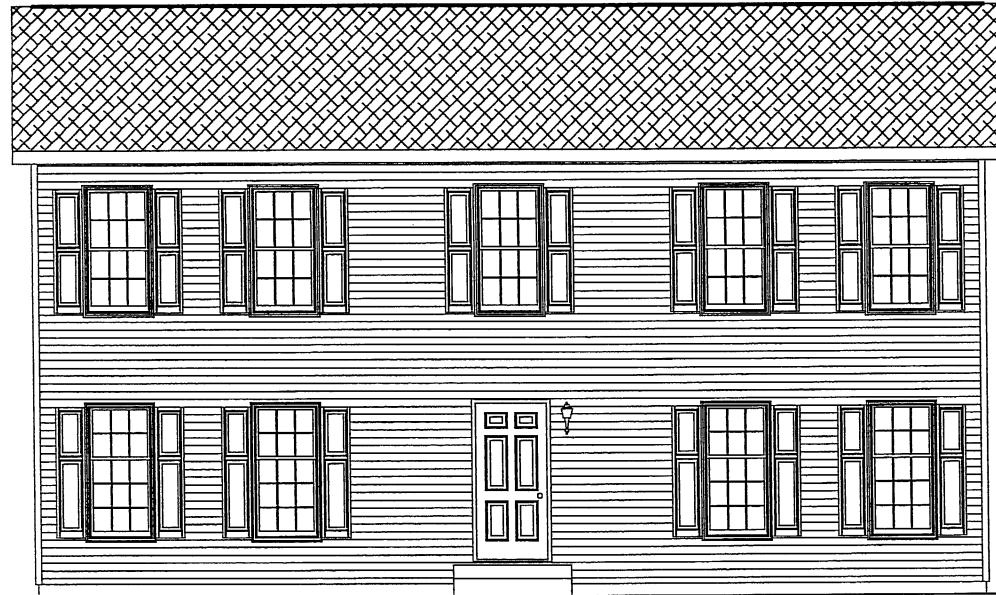
THIS DOCUMENT AND THE SUBJECT MATTER CONTAINED HEREIN IS PROPRIETARY, AND MAY NOT BE REPRODUCED WITHOUT THE WRITTEN PERMISSION OF "ProBuilt Homes"

CUSTOMER/PROJECT: \_\_\_\_\_  
BUILDER: \_\_\_\_\_

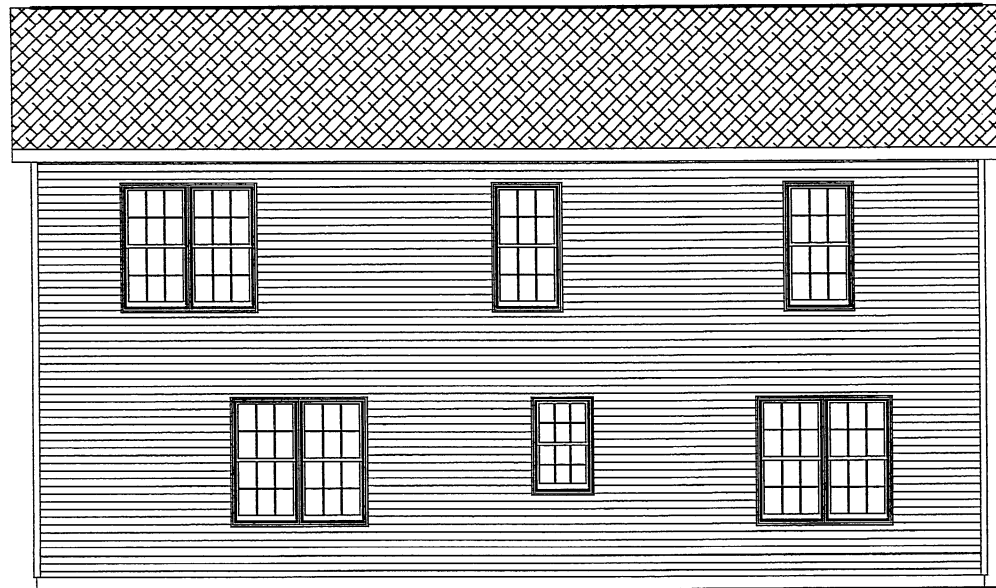
REV#	DATE	REVISIONS	BY	CHECKED BY:
1	11/23/03	UPDATE FLOORPLAN	JMS	
DRAWN BY:	DATE:	SCALE:	CHECKED BY:	
MK	4/23/03			

FILE: GETTYSBURG  
SQ.FT.: 2202  
STATE: PA  
TYPE: 28 2 STORY  
MODEL: GETTYSBURG  
DRAWING:  
SHEET:





FRONT ELEVATION



REAR ELEVATION

ACTUAL HOUSE MAY VARY

**ProBuilt Homes**

20 INDUSTRIAL CIRCLE, MIFELINTOWN, PA 17059  
 PHONE # (717) 436 - 6434 / FAX # (717) 436 - 6431

**COPYRIGHT © 2003**

THIS DOCUMENT AND THE SUBJECT MATTER CONTAINED HEREIN IS PROPRIETARY, AND MAY NOT BE REPRODUCED WITHOUT THE WRITTEN PERMISSION OF "ProBuilt Homes"

CUSTOMER/PROJECT:

BUILDER:

BY	DATE	REVISIONS	CHECKED BY:
LMJ		UPDATE FLOORPLAN	
DATE	BY	DATE	SCALE
11/13/03		4/23/03	
DRWN BY:	DATE:	SCALE:	CHECKED BY:
MK			

FILE: GETTYSBURG

SQ.FT.: 2202

STATE:

TYPE: 28 2 STORY

MODEL: GETTYSBURG

DRAWING: FRONT ELEVATION

SHEET: 4