

NOTES:

1. 2x6 SPF#2 EXT. WALLS @ 16" O.C. / 2x4 SPF#2 MARR. WALLS
2. 8'-0" CLG HT.
3. 2x10 SPF#2 FLOORJOISTS @ 16" O.C.
4. ROOF SYSTEM TO BE 16" O.C.
5. MW DOUBLE HUNG WINDOWS (NFRS CERTIFIED)

ProBuilt Homes

20 INDUSTRIAL CIRCLE, MILFORD, PA 17059
 PHONE # (717) 456-6434 / FAX # (717) 456-6431

COPYRIGHT © 2003
 THIS DOCUMENT AND THE SUBJECT MATTER CONTAINED HEREIN IS PROPRIETARY, AND MAY NOT BE REPRODUCED WITHOUT THE WRITTEN PERMISSION OF "ProBuilt Homes"

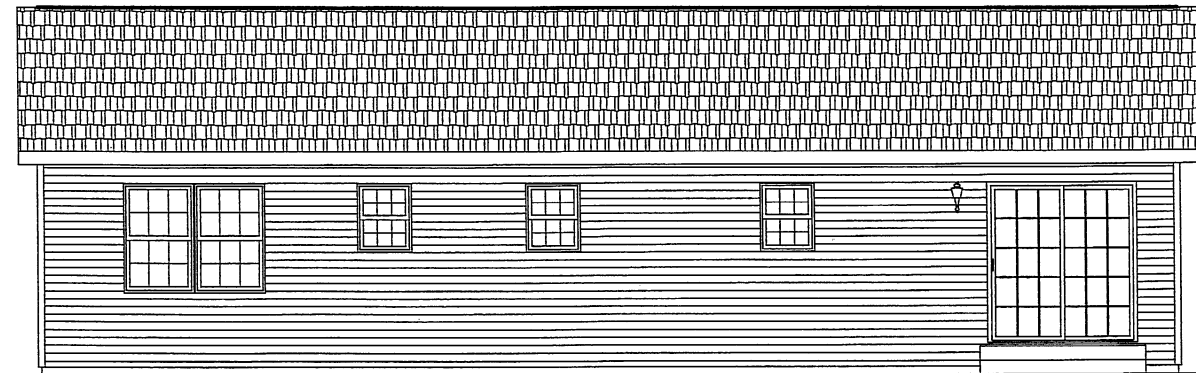
CUSTOMER/PROJECT: _____
 BUILDER: _____

REV#	DATE	REVISIONS	BY	CHECKED BY:
1	11/29/03	UPDATE FLOORPLAN	MMS	
DRAWN BY: DATE: 6/5/03			SCALE: MK	

FILE: McVEYTON
 SQFT: 1315
 STATE:
 TYPE: RAISE RANCH
 MODEL: THE McVEYTON
 DRAWING:
 SHEET:



FRONT ELEVATION



REAR ELEVATION

ProBuilt Homes

20 INDUSTRIAL CIRCLE, MITTINTOWN, PA 17059
 PHONE # (717) 456 - 6434 / FAX # (717) 456 - 6431

COPYRIGHT © 2003
 THIS DOCUMENT AND THE
 SUBJECT MATTER
 CONTAINED HEREIN IS
 PROPRIETARY AND MAY
 NOT BE REPRODUCED
 WITHOUT THE WRITTEN
 PERMISSION OF
 "ProBuilt Homes"

CUSTOMER/PROJECT:
 BUILDER:

BY MKS	REVISIONS UPDATE ELDORPLAN	CHECKED BY:
REV# 1	DATE 07/29/03	SCALE: 1/8" = 1'-0"
	DRAWN BY: MK	DATE: 5/5/03

FILE: McVEYTOWN
 SQ.FT.: 1315
 STATE:
 TYPE: RAISE RANCH
 MODEL: THE McVEYTOWN
 DRAWING: FRONT ELEVATION
 SHEET: 4