

- NOTES:
1. 2x6 SPF#2 EXT. WALLS @ 16" O.C. / 2x4 SPF#2 MARR. WALLS
 2. 8'-0" CLG HT.
 3. 2x10 SPF#2 FLOORJOISTS @ 16" O.C.
 4. ROOF SYSTEM TO BE 16" O.C.
 5. MW DOUBLE HUNG TWINSEAL WINDOWS (NFRC CERTIFIED)

ProBuilt Homes

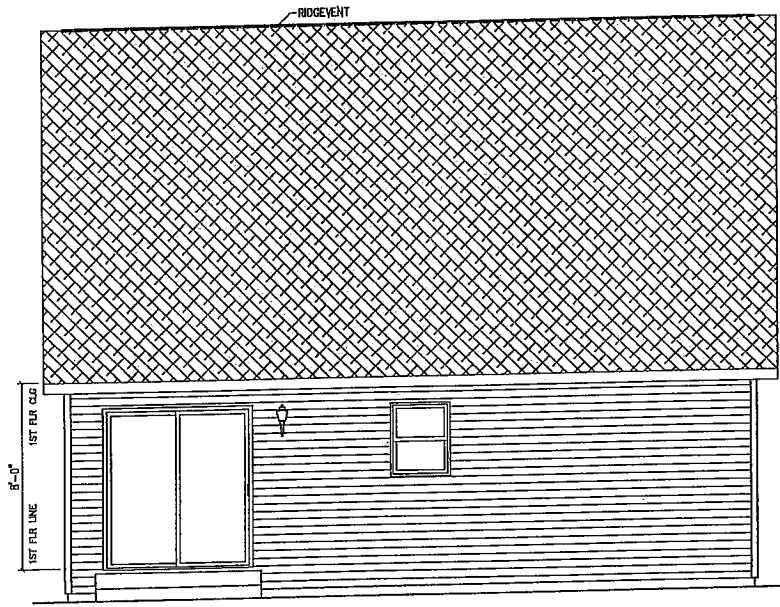
20 INDUSTRIAL CIRCLE; MIFFLINTOWN, PA 17059
 PHONE # (717) 436 - 6434 / FAX # (717) 436 - 6431

COPYRIGHT © 2003
 THIS DOCUMENT AND THE SUBJECT MATTER CONTAINED HEREIN IS PROPRIETARY, AND MAY NOT BE REPRODUCED WITHOUT THE WRITTEN PERMISSION OF "ProBuilt Homes"

CUSTOMER / PROJECT: **COVINGTON**
 BUILDER:

REV#	DATE	REVISIONS	BY	CHECKED BY:
1	11-9-04	ELECTRICAL	RTO	
SCALE: 3/16" = 1'-0"			DATE:	10-12-04
DRAWN BY: BC			DATE:	10-12-04

FILE: **ECONO CAPE 3**
 SQ.FT.: **798**
 STATE:
 TYPE: **CAPE**
 MODEL: **ECONO CAPE 3**
 DRAWING: **1ST FLOOR PLAN LAYOUT**
 SHEET: **1**



REAR ELEVATION

ProBuilt Homes

20 INDUSTRIAL CIRCLE, MILFINTON, PA 17069
 PHONE # (717) 436 - 6434 / FAX # (717) 436 - 6431

COPYRIGHT © 2003

THIS DOCUMENT AND THE SUBJECT MATTER CONTAINED HEREIN IS PROPRIETARY, AND MAY NOT BE REPRODUCED WITHOUT THE WRITTEN PERMISSION OF "ProBuilt Homes"

CUSTOMER/PROJECT: COVINGTON

BUILDER:

REV#	DATE	REVISIONS	BY	CHECKED BY:
1	11-3-04	ELECTRICAL	KTD	
				SCALE: 3/16"=1'-0"
				DATE: 10-12-04
				BC

FILE: ECONO CAPE 3

SQ.FT.: 798

STATE:

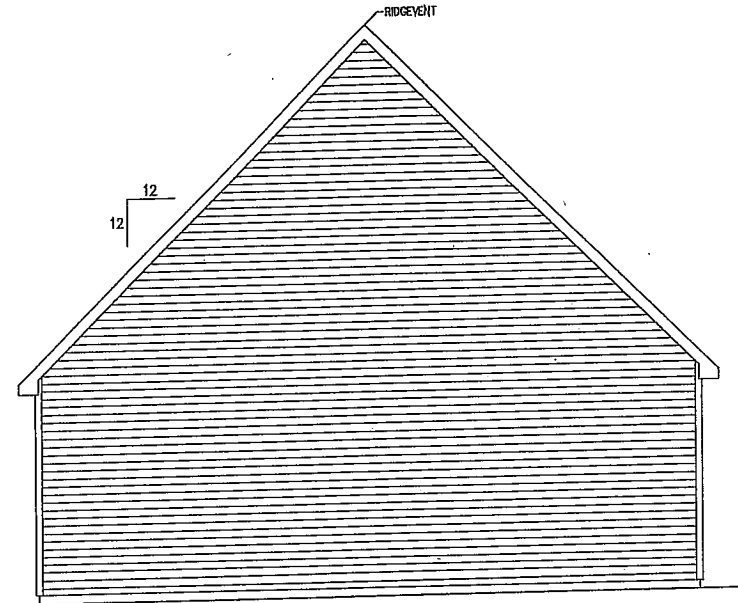
TYPE: CAPE

MODEL: ECONO CAPE 3

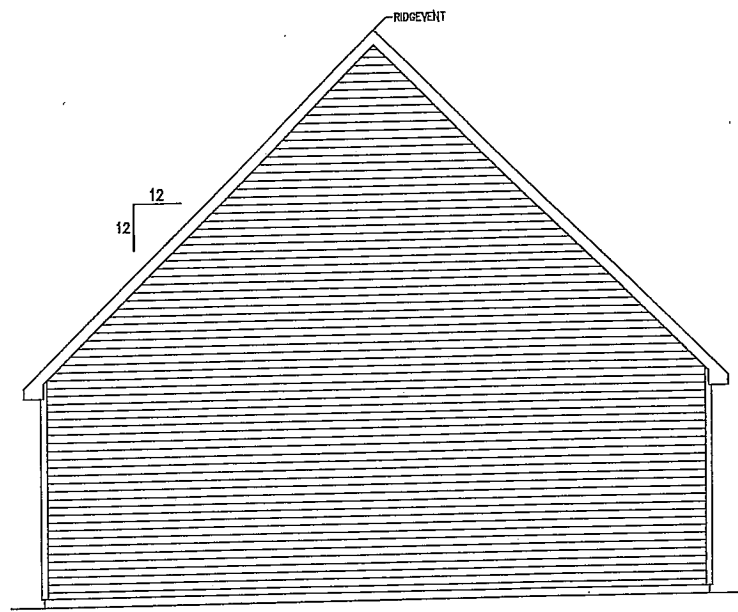
DRAWING: REAR ELEVATION

ELEVATION

SHEET: 4A



LEFT SIDE ELEVATION



RIGHT SIDE ELEVATION

ProBuilt Homes
 20 INDUSTRIAL CIRCLE, WHEELING, PA. 17069
 PHONE # (717) 436 - 6434 / FAX # (717) 436 - 6431

COPYRIGHT © 2003
 THIS DOCUMENT AND THE SUBJECT MATTER CONTAINED HEREIN IS PROPRIETARY, AND MAY NOT BE REPRODUCED WITHOUT THE WRITTEN PERMISSION OF "ProBuilt Homes"

CUSTOMER/PROJECT: **COVINGTON**
 BUILDER:

REV#	DATE	BY	REVISIONS	BY	DATE	CHECKED BY:
1	11-13-04	KTD	ELECTRICAL			
DRAWN BY: DATE						SCALE: 3/16" = 1'-0"
BC						10-12-04

FILE: **ECONO CAPE 3**
 SQ. FT.: **798**
 STATE:
 TYPE: **CAPE**
 MODEL:
ECONO CAPE 3
 DRAWING:
LEFT END ELEVATION
 SHEET:
4B