

- NOTES:
- 2x6 SPF#2 EXT. WALLS @ 16" O.C. / 2x4 SPF#2 MARR. WALLS
 - 8'-0" CLG HT.
 - 2x10 SPF#2 FLOORJOISTS @ 16" O.C.
 - ROOF SYSTEM TO BE 16" O.C.
 - MW DOUBLE HUNG TWINSEAL WINDOWS (NFRS CERTIFIED)

ProBuilt Homes

20 INDUSTRIAL CIRCLE, MIFFLINTOWN, PA 17059
 PHONE # (717) 436 - 6434 / FAX # (717) 436 - 6431

COPYRIGHT © 2003

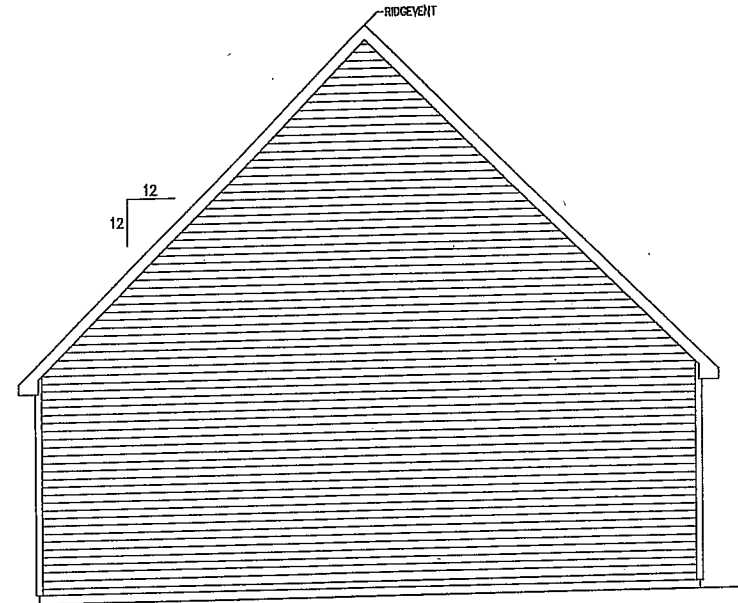
THIS DOCUMENT AND THE SUBJECT MATTER CONTAINED HEREIN IS PROPRIETARY AND MAY NOT BE REPRODUCED WITHOUT THE WRITTEN PERMISSION OF "ProBuilt Homes"

CUSTOMER/PROJECT: COVINGTON

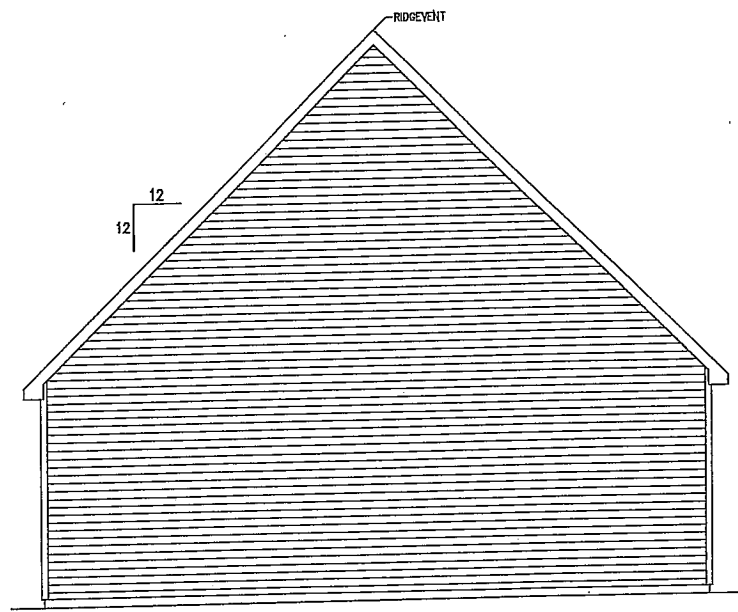
BUILDER:

REV#	DATE	REVISIONS	BY	CHECKED BY:
1	11-9-04	ELECTRICAL	KTD	
DRAWN BY: BC		DATE: 10-12-04	SCALE: 3/16" = 1'-0"	

FILE:	
SQ.FT.:	904
STATE:	
TYPE:	CAPE
MODEL:	
DRAWING:	1ST FLOOR PLAN LAYOUT
SHEET:	1



LEFT SIDE ELEVATION



RIGHT SIDE ELEVATION

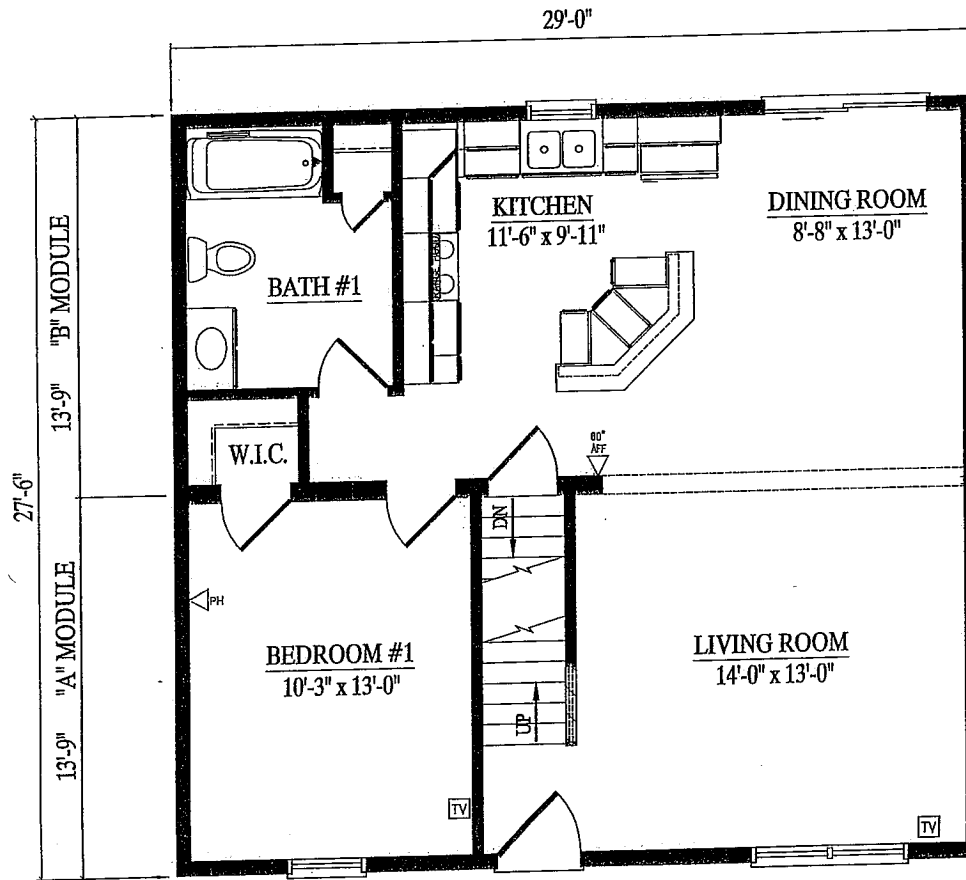
ProBuilt Homes
 20 INDUSTRIAL CIRCLE, WHEELING, PA. 17069
 PHONE # (717) 436 - 6434 / FAX # (717) 436 - 6431

COPYRIGHT © 2003
 THIS DOCUMENT AND THE SUBJECT MATTER CONTAINED HEREIN IS PROPRIETARY, AND MAY NOT BE REPRODUCED WITHOUT THE WRITTEN PERMISSION OF "ProBuilt Homes"

CUSTOMER/PROJECT: **COVINGTON**
 BUILDER:

REV#	DATE	BY	REVISIONS	BY	DATE	CHECKED BY:
1	11-13-04	KTD	ELECTRICAL			
			SCALE:	10'-12'-04" 3/16" = 1'-0"		
			DRAWN BY:	BC		

FILE: **ECONO CAPE 3**
 SQ.FT.: **798**
 STATE:
 TYPE: **CAPE**
 MODEL: **ECONO CAPE 3**
 DRAWING: **LEFT END ELEVATION**
 SHEET: **4B**



CAPE COVINGTON
 27'-6" x 29'-0"
 798 SQ. FT

ProBuilt Homes

20 INDUSTRIAL CIRCLE; MIFFLINTOWN, PA 17059
 PHONE # (717) 436 - 6434 / FAX # (717) 436 - 6431

COPYRIGHT © 2003

THIS DOCUMENT AND THE SUBJECT MATTER CONTAINED HEREIN IS PROPRIETARY, AND MAY NOT BE REPRODUCED WITHOUT THE WRITTEN PERMISSION OF "ProBuilt Homes"

CUSTOMER/PROJECT:
COVINGTON

BUILDER:

REV#	DATE	REVISIONS	BY	CHECKED BY:
1	11-9-04	ELECTRICAL	KTO	
DRAWN BY: BC			DATE: 10-12-04	SCALE: 3/16" = 1'-0"

FILE:	ECONO CAPE 3
SQ.FT.:	798
STATE:	
TYPE:	CAPE
MODEL:	ECONO CAPE 3
DRAWING:	1ST FLOOR PLAN LAYOUT
SHEET:	1