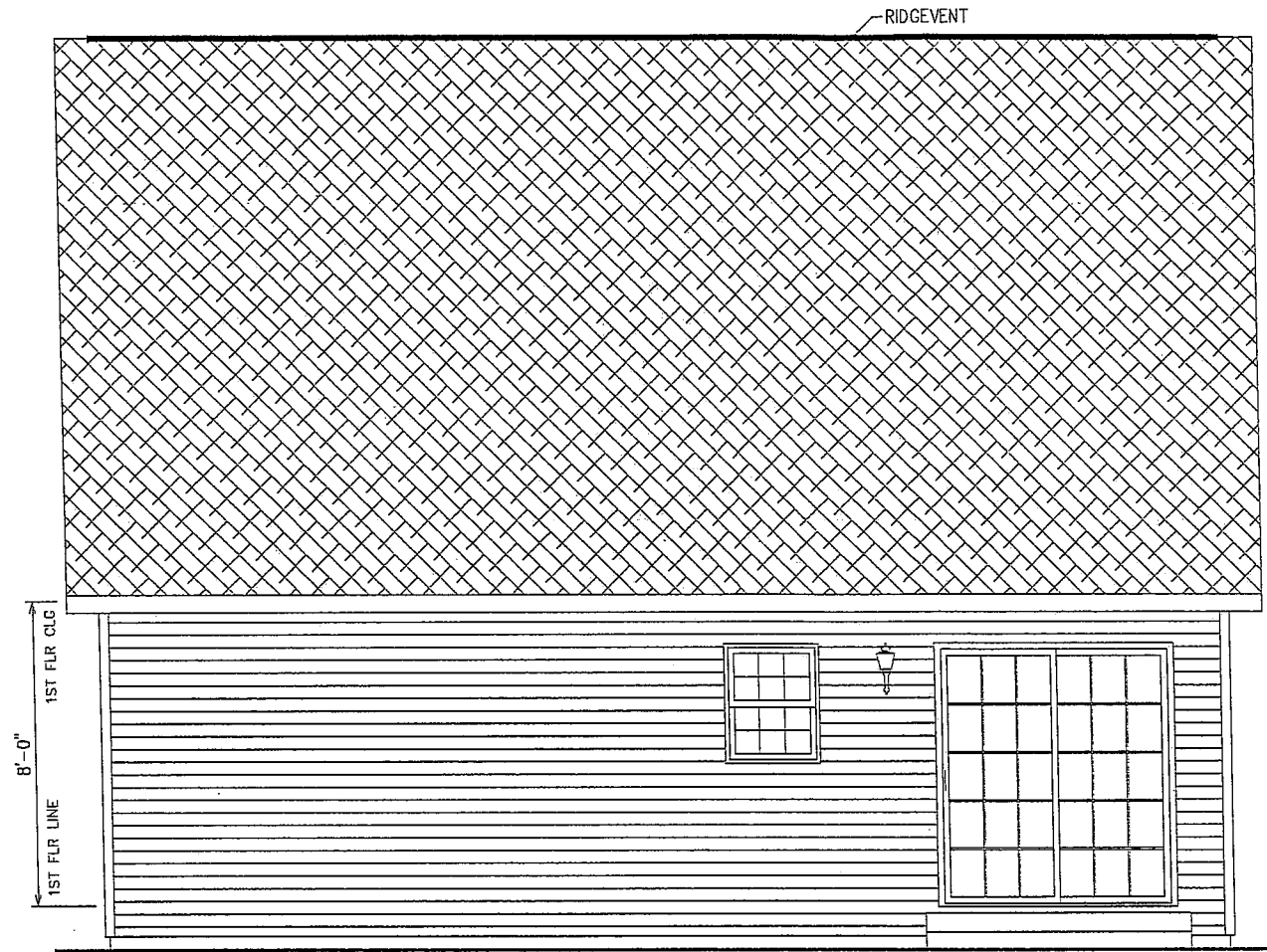
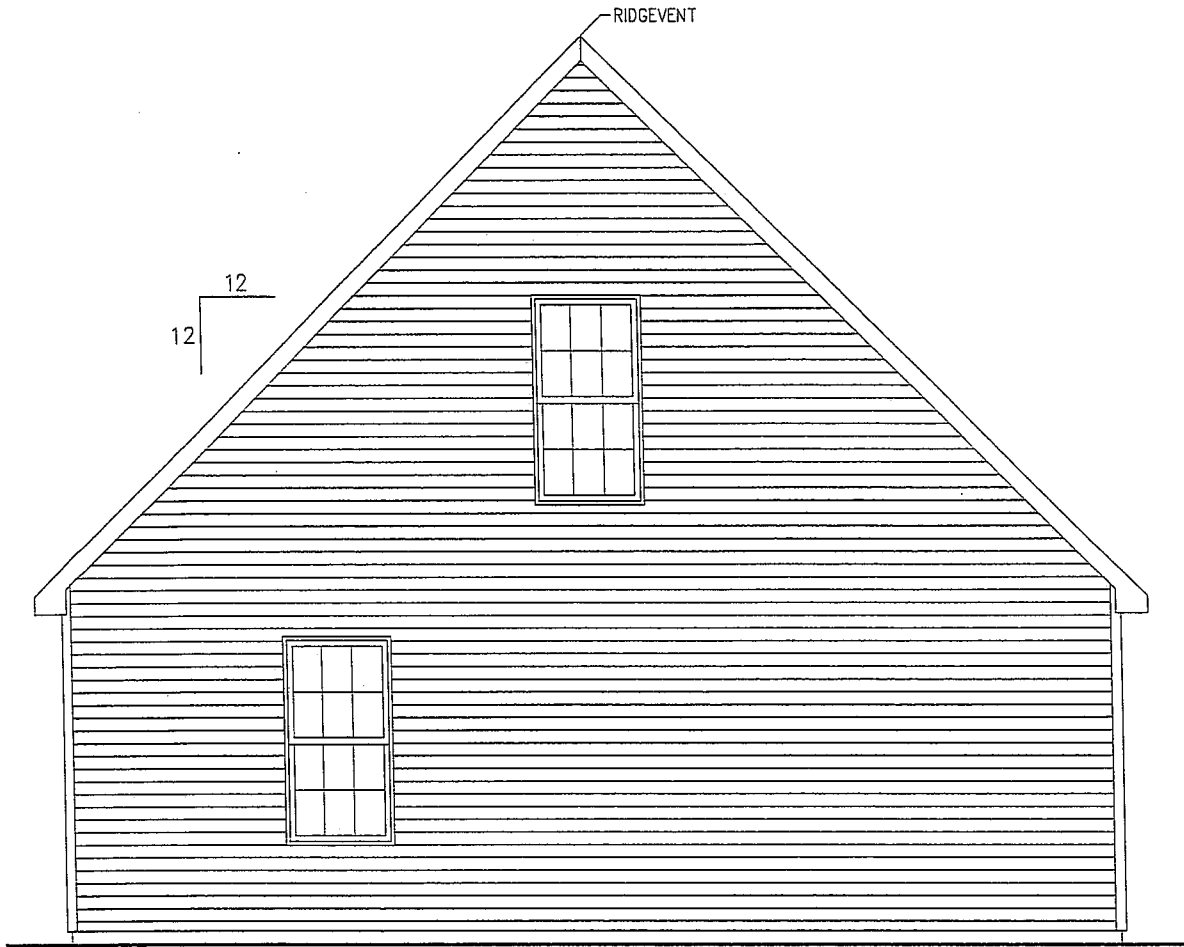




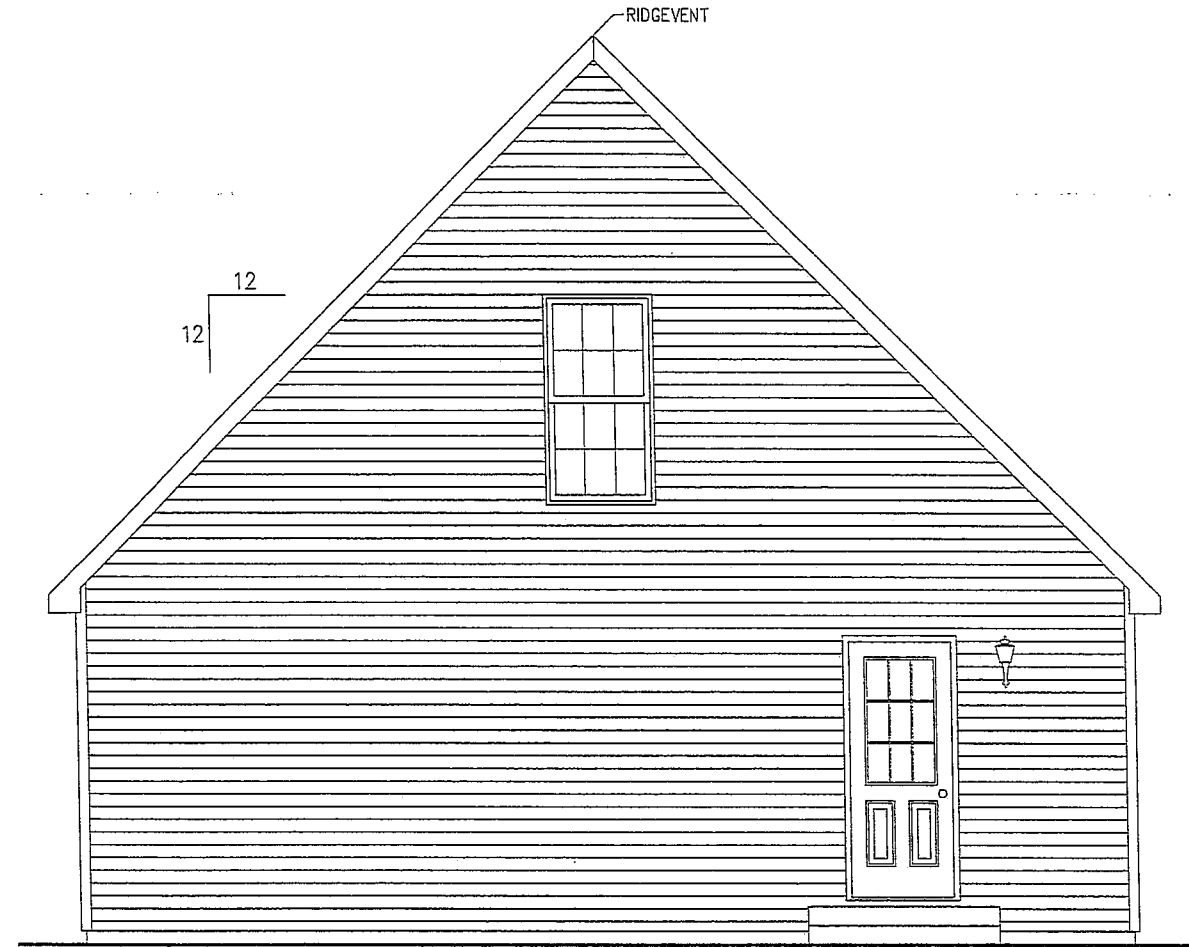
FRONT ELEVATION



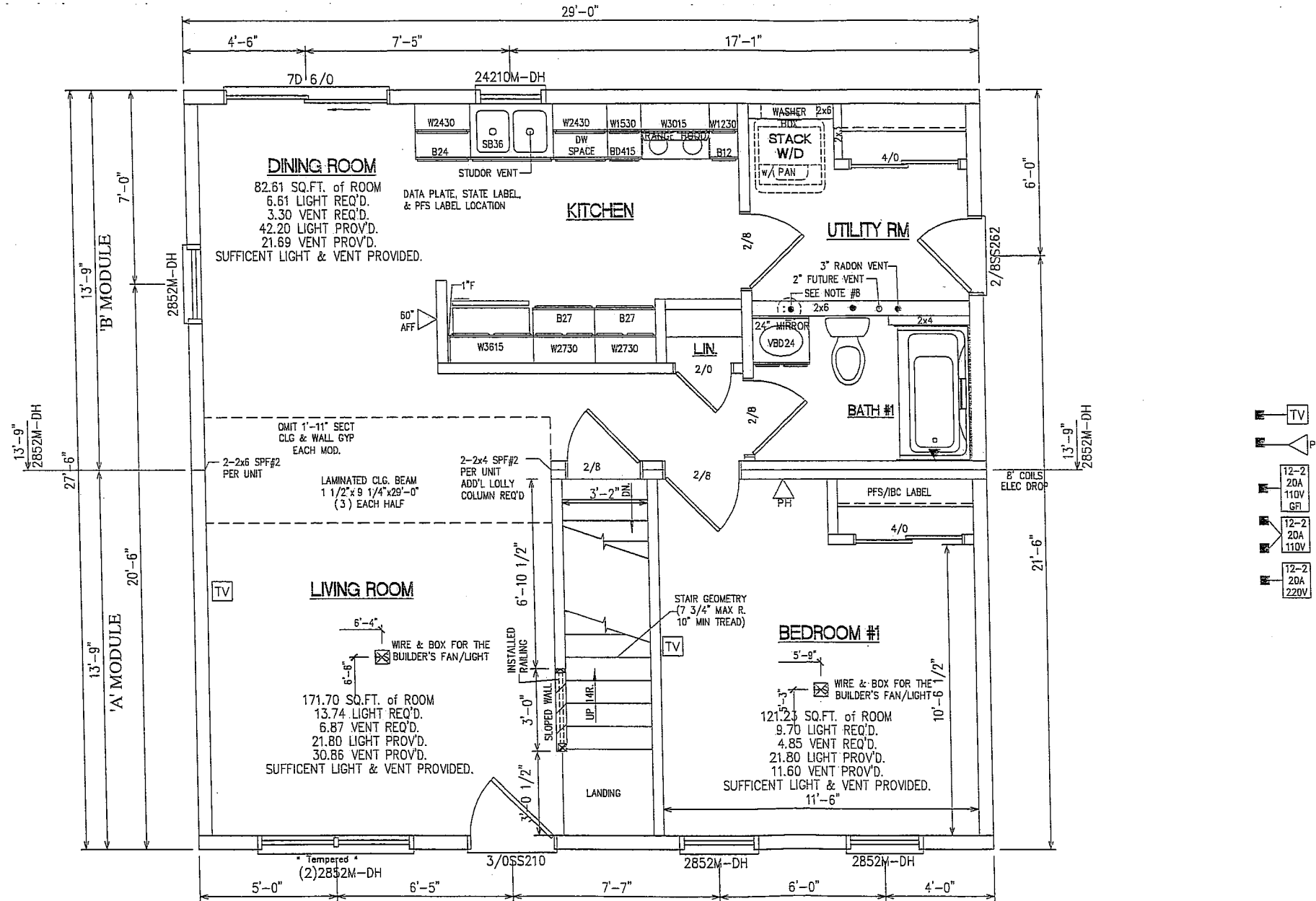
REAR ELEVATION



LEFT SIDE ELEVATION



RIGHT SIDE ELEVATION



NOTES:

1. 2x6 SPF#2 EXT. WALLS @ 16" O.C. / 2x4 SPF#2 MARR. WALLS
2. 8'-0" CLG HT.
3. 2x10 SPF#2 FLOORJOISTS @ 16" O.C.
4. ROOF SYSTEM TO BE 16" O.C.
5. MW DOUBLE HUNG WINDOWS (NFRC CERTIFIED) GBG's THRU-OUT
6. SITE LOCATION: MERRIMACK COUNTY, WARNER, NH / SNOW LOAD: 60 PSF
7. 100 MPH WIND LOAD
8. STUB PLUMBING 1-3" DRAIN, 4-3/4" SUPPLY LINES AND HEAT LINES TO 2ND FLOOR