

- NOTES:
1. 2x6 EXT. WALLS @ 16" O.C. / 2x4 MARR. WALLS 16" O.C.
 2. 8'-0" CLG HT.
 3. 2x10 SPF#2 FLOORJOISTS @ 16" O.C.
 4. ROOF SYSTEM TO BE 16" O.C.
 5. MW DOUBLE HUNG WINDOWS (NFRG CERTIFIED)

REV#	DATE	REVISIONS	BY

DRAWN BY:	DATE:	SCALE:	SALESMAN:
MJC	6-9-06	NTS	

CUSTOMER/PROJECT:
HANCOCK

BUILDER:

THIS DOCUMENT AND THE SUBJECT MATTER CONTAINED HEREIN IS FOR INFORMATION PURPOSES ONLY AND MAY BE REVISED WITHOUT THE WRITTEN PERMISSION OF "ProBUILT Homes"

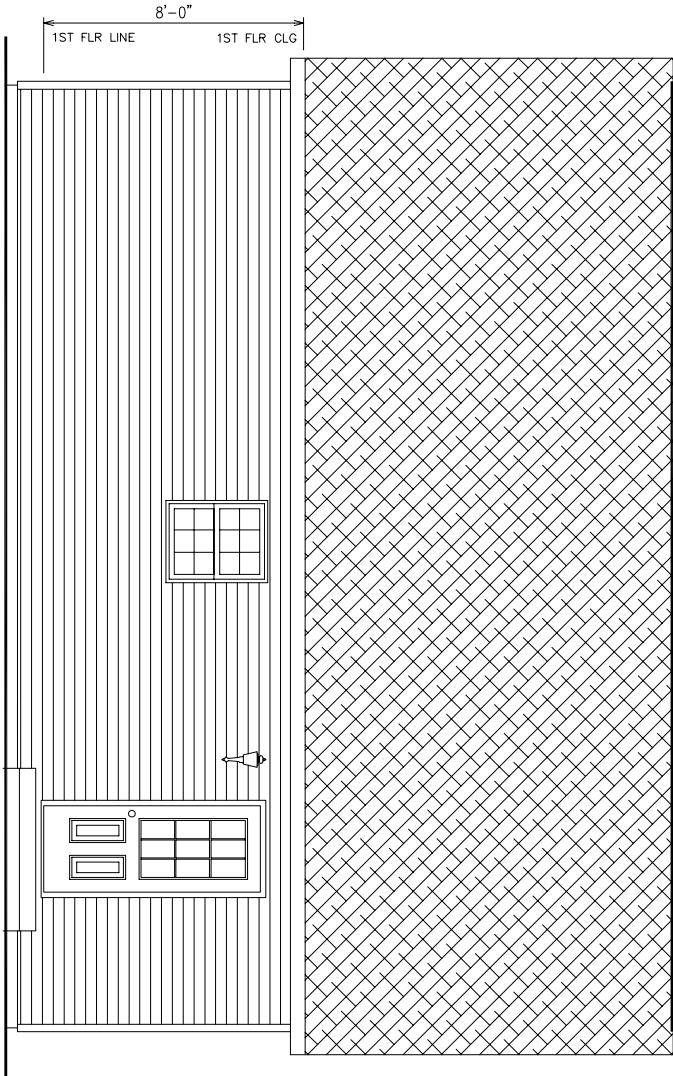
ProBUILT Homes

20 INDUSTRIAL CIRCLE; MIFFLINTOWN, PA 17059
PHONE # (717) 436 - 6434 / FAX # (717) 436 - 6431

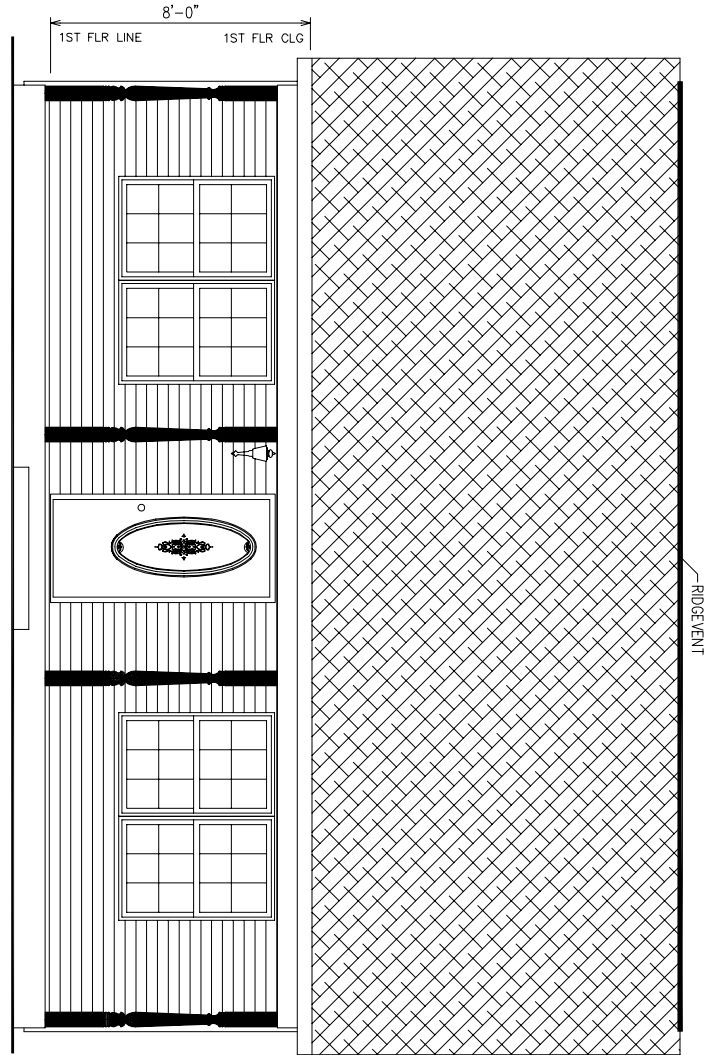
MODEL: RANCH
DRAWING: HANCOCK
DRAWING: 1ST FLOOR PLAN LAYOUT
SHEET: 3A

ELEVATIONS CONTAIN AVAILABLE OPTIONS

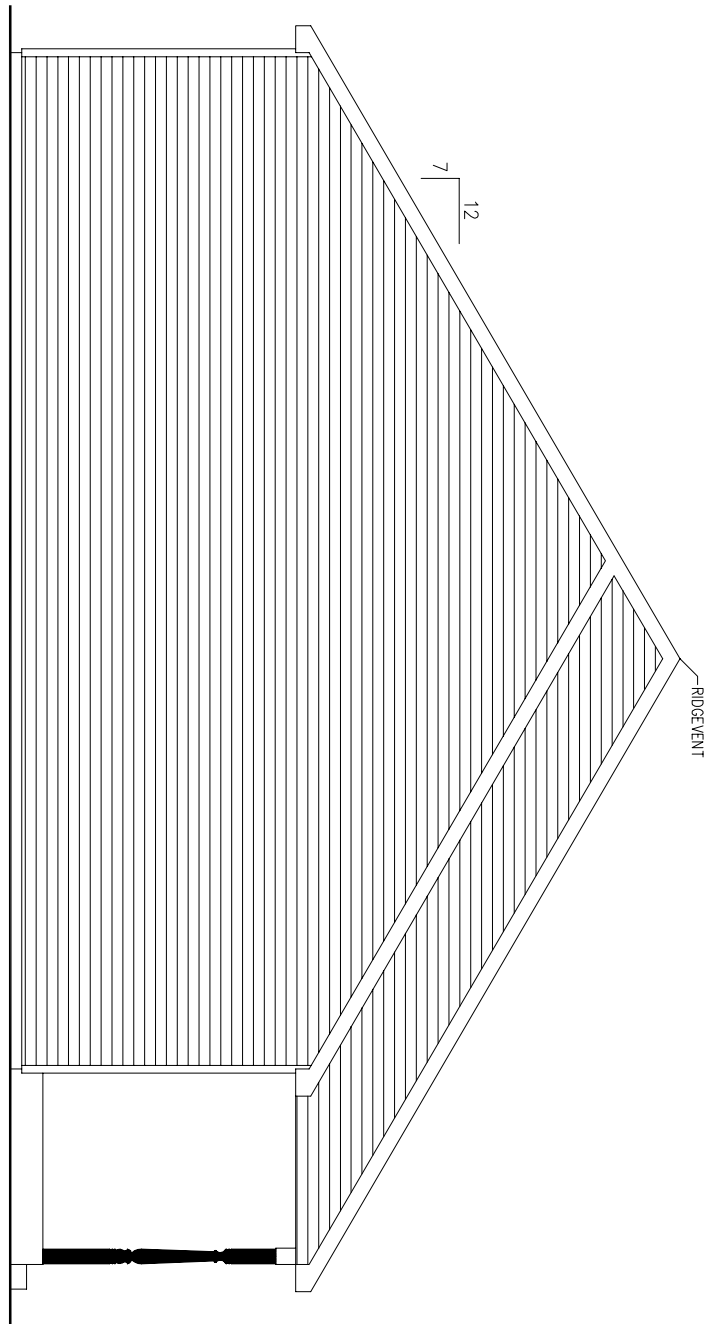
REAR ELEVATION



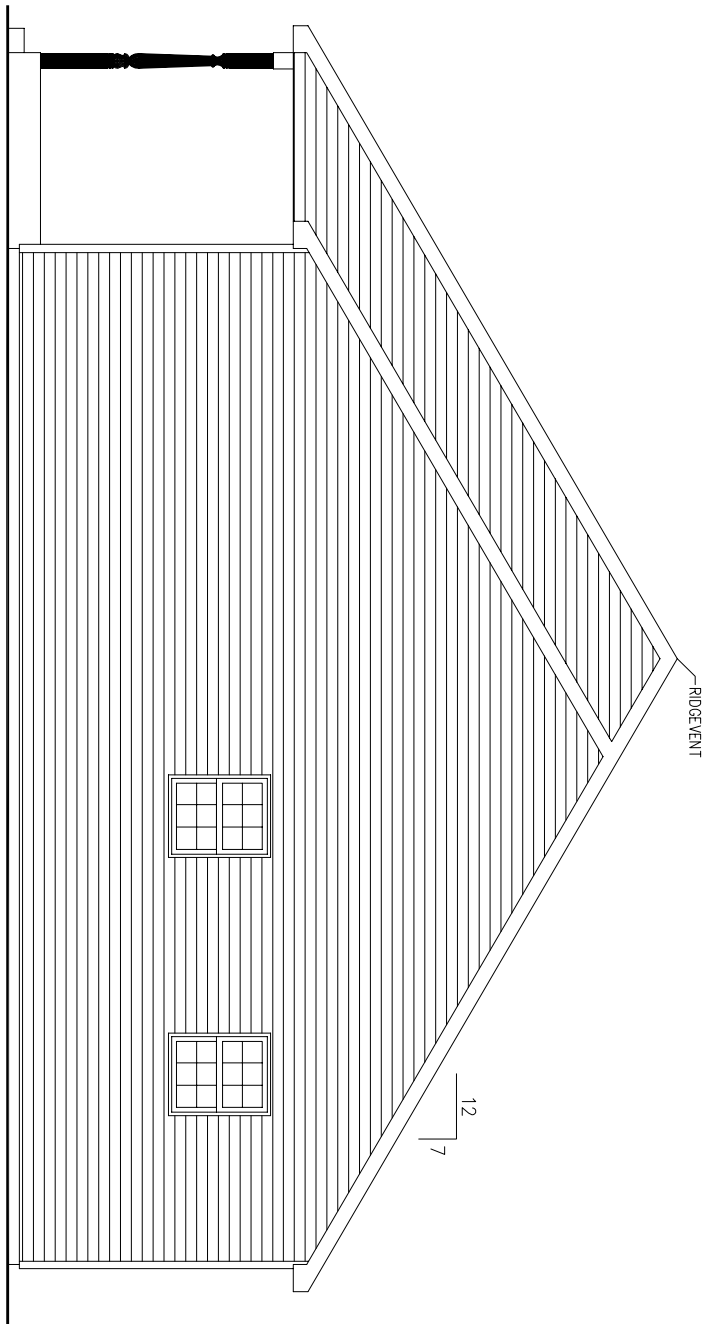
FRONT ELEVATION



SHEET: 2A	DRAWING: EXTERIOR ELEVATION	MODEL: HANCOCK	TYPE: RANCH	STATE: MISSOURI	SQ.FT.: 904	FILE: 32 HANCOCK	REV#	DATE	REVISIONS	BY	CUSTOMER/PROJECT: HANCOCK	DRAWN BY: MJC	DATE: 6-9-06	SCALE: NTS	SALESMAN:	BUILDER:	<p>THIS DOCUMENT AND THE SUBJECT MATTER CONTAINED HEREIN IS NOT BE RESPONSIBLE WITHOUT THE WRITTEN PERMISSION OF "ProBuilt Homes"</p>	<p>PROBUILT HOMES</p>	<p>20 INDUSTRIAL CIRCLE; MIFFLINTOWN, PA 17059 PHONE # (717) 436 - 6434 / FAX # (717) 436 - 6431</p>
							<p>PROBUILT HOMES</p>												



LEFT SIDE ELEVATION



RIGHT SIDE ELEVATION

ELEVATIONS CONTAIN AVAILABLE OPTIONS

SHEET: 2B	DRAWING: HANCOCK EXTERIOR ELEVATION	MODEL: RANCH	STATE: 904	FILE: 32 HANCOCK	CUSTOMER/PROJECT: HANCOCK		
		TYPE: RANCH	SAFT: 904	REV#	DATE	REVISIONS	BY
		DATE: 6-9-06	SCALE: NTS	DRAWN BY: MJC	SALESMAN:		
					BUILDER:		

COPYRIGHT © 2006
THIS DOCUMENT AND THE SUBJECT MATTER CONTAINED HEREIN IS PROPRIETARY AND MAY NOT BE REPRODUCED OR TRANSMITTED IN ANY FORM OR BY ANY MEANS WITHOUT THE WRITTEN PERMISSION OF "ProBuilt Homes"

ProBuilt Homes
20 INDUSTRIAL CIRCLE; MIFFLINTOWN, PA 17059
PHONE # (717) 436 - 6434 / FAX # (717) 436 - 6431