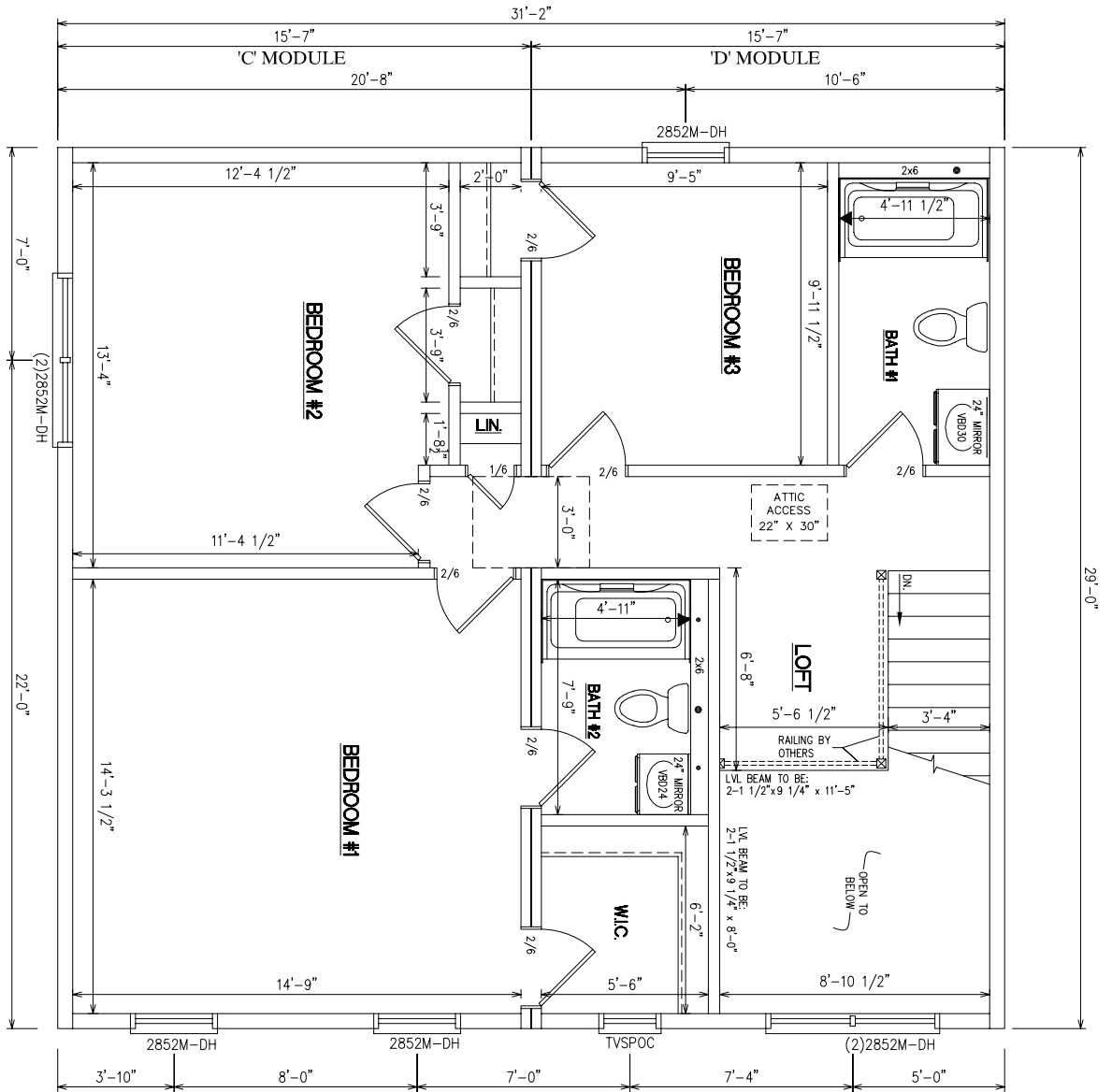


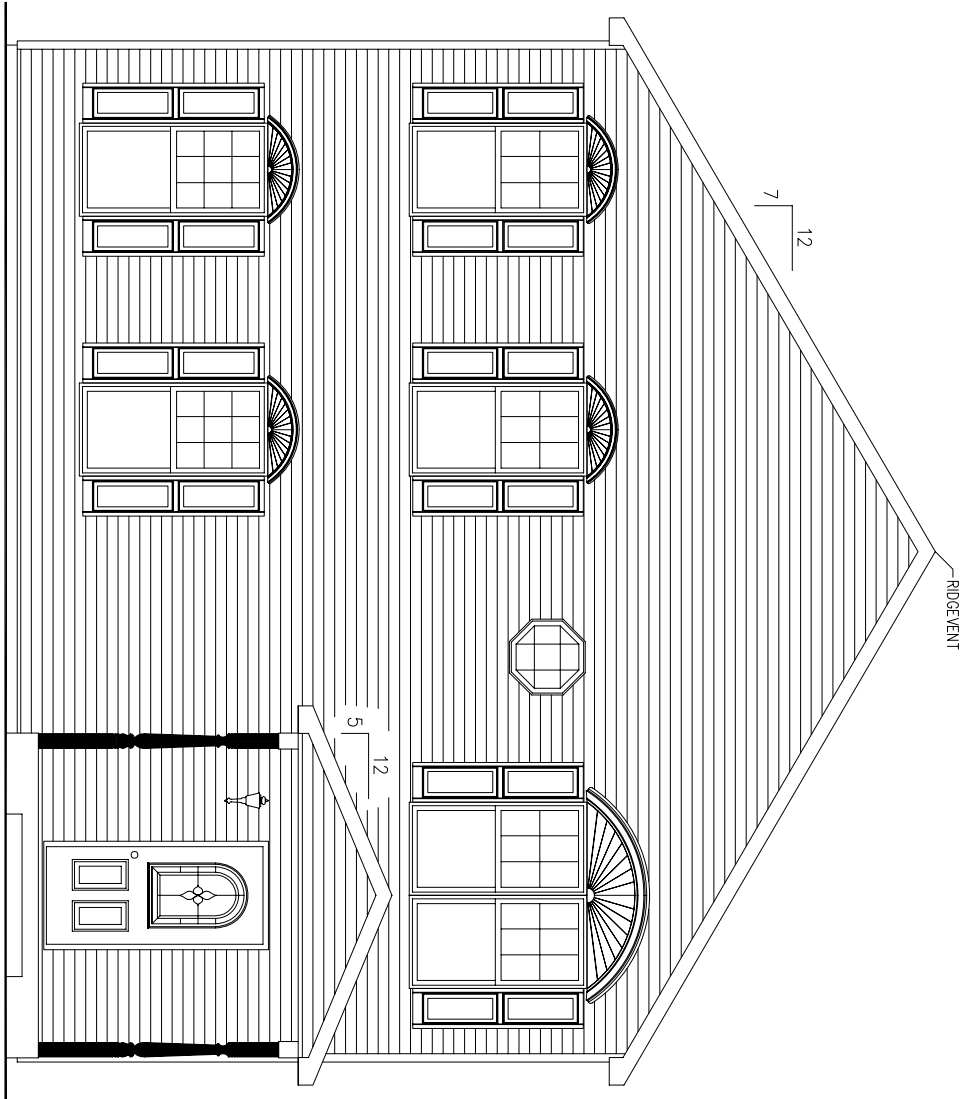
- NOTES:
1. 2x6 EXT. WALLS @ 16" O.C. / 2x4 MARR. WALLS 16" O.C.
 2. 8'-0" CLG HT.
 3. 2x10 SPF#2 FLOORJOISTS @ 16" O.C.
 4. MW DOUBLE HUNG WINDOWS (NFRCC CERTIFIED)

PROBUILT HOMES 20 INDUSTRIAL CIRCLE; MIFFLINTOWN, PA 17059 PHONE # (717) 436 - 6434 / FAX # (717) 436 - 6431		THIS DOCUMENT AND THE SUBJECT MATTER CONTAINED HEREIN IS PROPRIETARY AND MAY NOT BE REPRODUCED OR TRANSMITTED IN ANY FORM WITHOUT THE WRITTEN PERMISSION OF "ProBUILT Homes"	
PROBUILT HOMES		CUSTOMER/PROJECT: AMELIA	
DRAWN BY: MMS DATE: _____ SCALE: NTS SALESMAN: _____		BUILDER: _____	
REV# _____ DATE _____ REVISIONS _____ BY _____	FILE: 32 AMELIA SQ.FT.: 1808 STATE: _____ TYPE: TWO STORY MODEL: AMELIA DRAWING: 1ST FLOOR PLAN LAYOUT SHEET: 3A		



- NOTES:
1. 2x6 EXT WALLS 16" O.C. / 2x4 MARR. WALLS 16" O.C.
 2. 8'-0" CLG HT.
 3. 2x10 SPF#2 FLOORJOISTS @ 16" O.C.
 4. ROOF SYSTEM TO BE 16" O.C.
 5. MW DOUBLE HUNG WINDOWS (NFRC CERTIFIED)

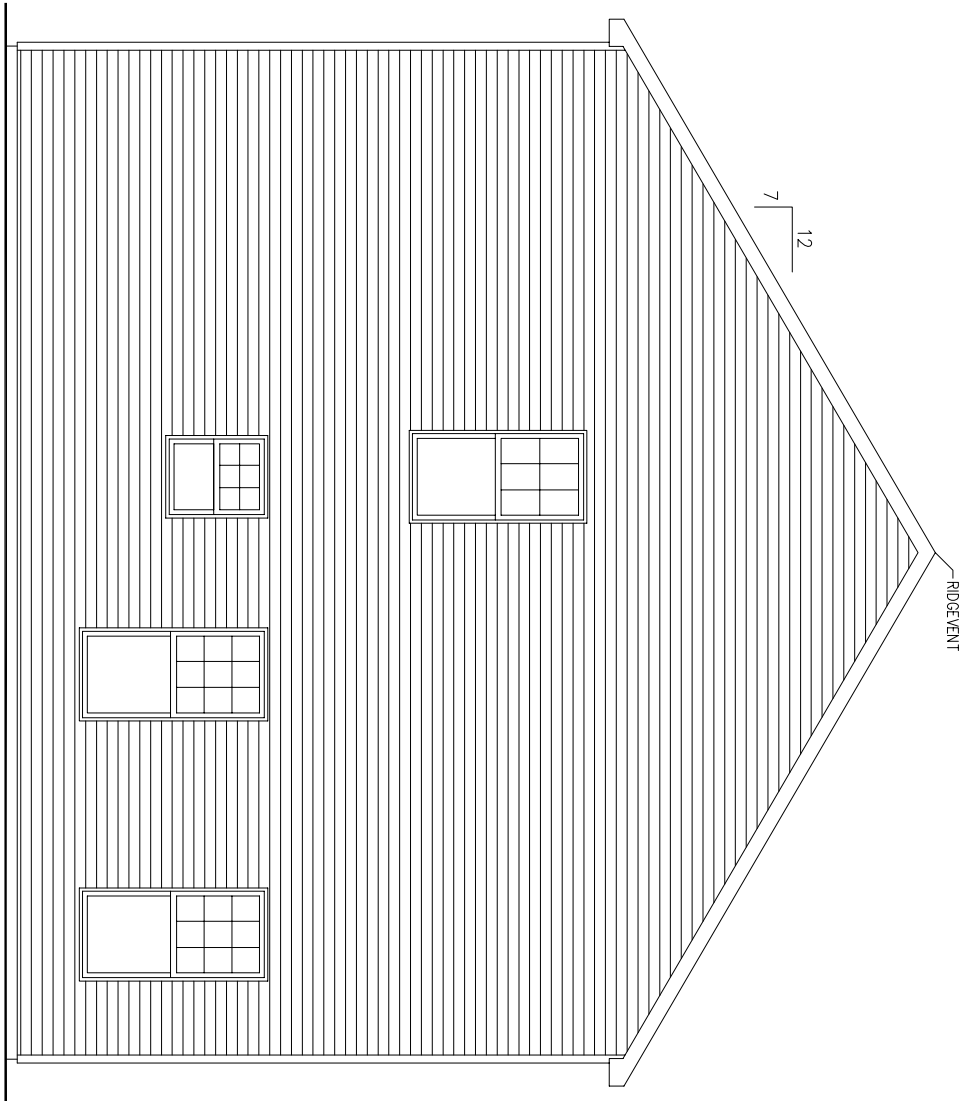
SHEET: 3B	DRAWING: 2ND FLOOR PLAN LAYOUT	MODEL: AMELIA	TYPE: TWO STORY	STATE: 1808	SQ.FT.: 1808	FILE: 32 AMELIA	REV#	DATE	REVISIONS	BY	CUSTOMER/PROJECT: AMELIA	BUILDER:	THIS DOCUMENT AND THE SUBJECT MATTER IS PROPERTY OF PROBUILT HOMES AND SHALL NOT BE REPRODUCED OR TRANSMITTED IN ANY FORM OR BY ANY MEANS WITHOUT THE WRITTEN PERMISSION OF "ProBuilt Homes" COPYRIGHT © 2005	<h1>ProBuilt Homes</h1> <p>20 INDUSTRIAL CIRCLE; MIFFLINTOWN, PA 17059 PHONE # (717) 436 - 6434 / FAX # (717) 436 - 6431</p>
							DRAWN BY: MMS	DATE:	SCALE: NTS	SALESMAN:				



FRONT ELEVATION

ELEVATIONS CONTAIN AVAILABLE OPTIONS

SHEET: 2C	DRAWING: EXTERIOR ELEVATION	MODEL: AMELIA	TYPE: TWO STORY	STATE:	SQ.FT.: 1808	FILE: 32 AMELIA	REV# DATE REVISIONS BY	CUSTOMER/PROJECT: AMELIA	BUILDER:	THIS DOCUMENT AND THE SUBJECT MATTER IS THE PROPERTY OF PROBUILT HOMES AND SHALL NOT BE REPRODUCED OR TRANSMITTED IN ANY FORM OR BY ANY MEANS WITHOUT THE WRITTEN PERMISSION OF "ProBuilt Homes"	<p style="text-align: center;">ProBuilt Homes</p> 20 INDUSTRIAL CIRCLE; MIFFLINTOWN, PA 17059 PHONE # (717) 436 - 6434 / FAX # (717) 436 - 6431
						DRAWN BY: MMS DATE: SCALE: NTS SALESMAN:					



REAR ELEVATION

ELEVATIONS CONTAIN AVAILABLE OPTIONS

ProBuilt Homes

20 INDUSTRIAL CIRCLE; MIFFLINTOWN, PA 17059
 PHONE # (717) 436 - 6434 / FAX # (717) 436 - 6431

COPYRIGHT © 2005

THIS DOCUMENT AND THE SUBJECT MATTER CONTAINED HEREIN IS THE PROPERTY OF PROBUILT HOMES AND IS NOT TO BE REPRODUCED OR TRANSMITTED IN ANY FORM OR BY ANY MEANS WITHOUT THE WRITTEN PERMISSION OF "ProBuilt Homes"

CUSTOMER/PROJECT:
 AMELIA

BUILDER:

REV#	DATE	REVISIONS	BY

DRAWN BY: MMS	DATE:	SCALE: NTS	SALESMAN:
------------------	-------	---------------	-----------

FILE: 32 AMELIA

SQ.FT.: 1808

STATE:

TYPE:
TWO STORY

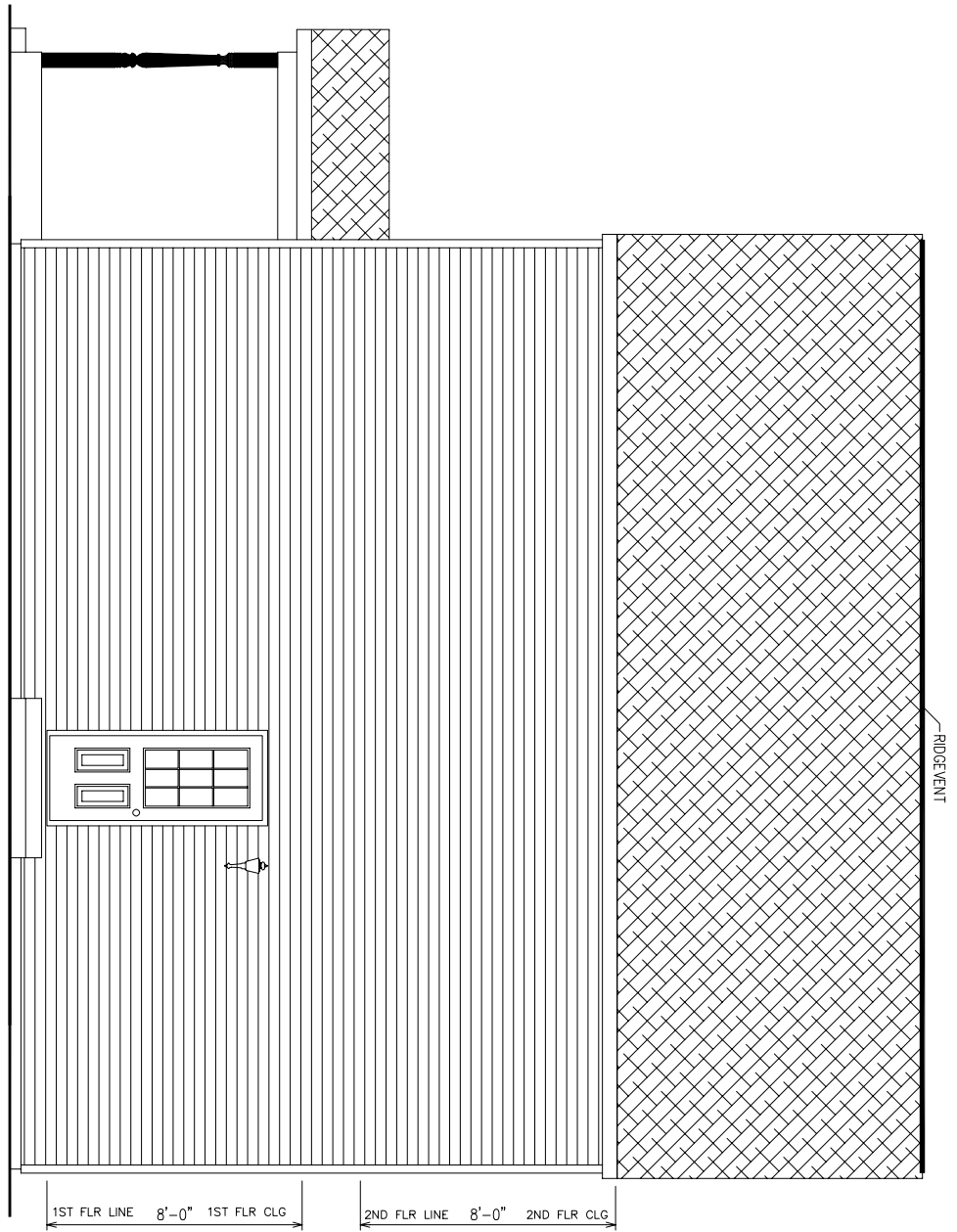
MODEL:
AMELIA

DRAWING:
EXTERIOR
ELEVATION

SHEET: 2D

ELEVATIONS CONTAIN AVAILABLE OPTIONS

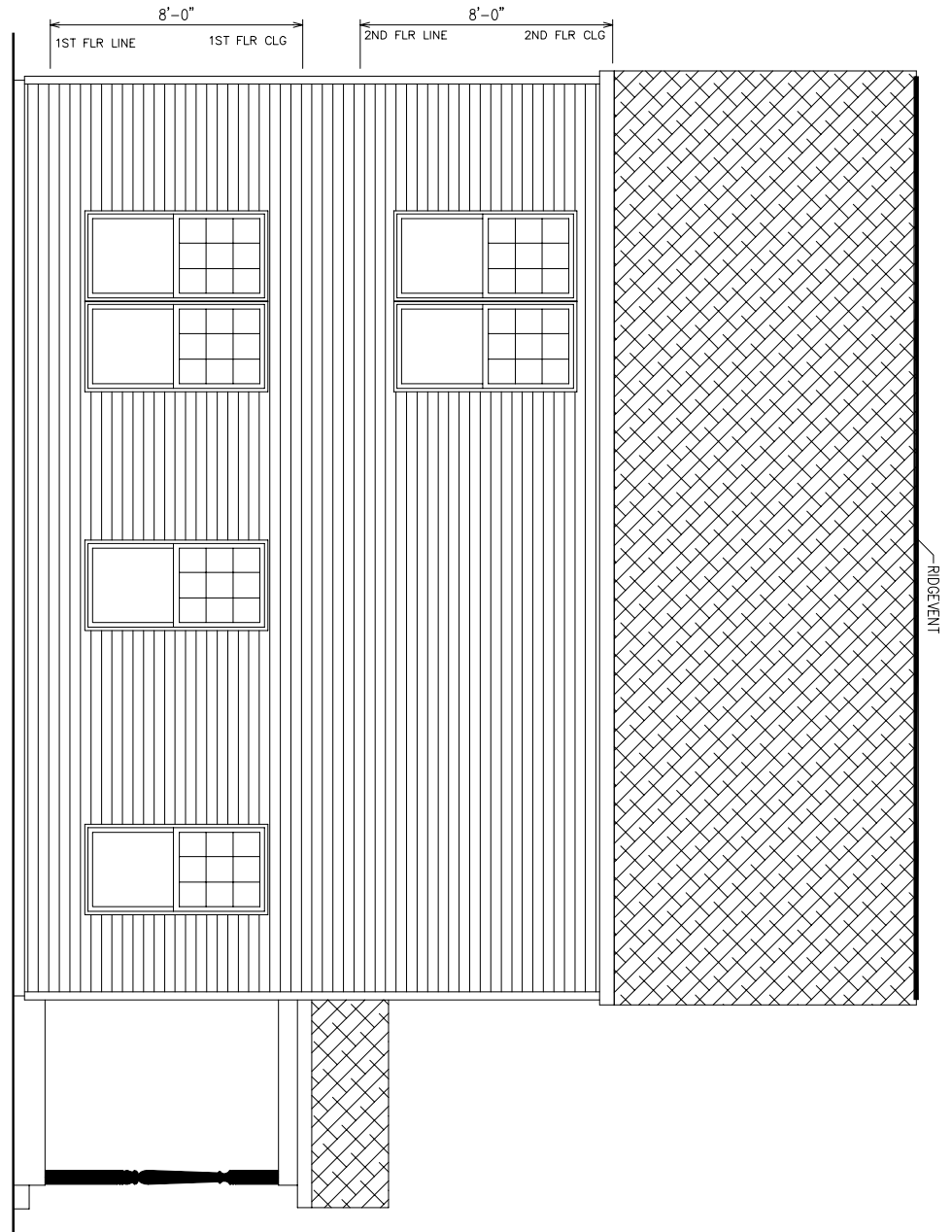
RIGHT SIDE ELEVATION



SHEET: 2B	DRAWING: EXTERIOR ELEVATION	MODEL: AMELIA	TYPE: TWO STORY	STATE: 1808	SQ.FT.: 1808	FILE: 32 AMELIA	REV# DATE REVISIONS BY	CUSTOMER/PROJECT: AMELIA	THIS DOCUMENT AND THE SUBJECT MATTER CONTAINED HEREIN IS PROPRIETARY AND MAY BE REPRODUCED OR TRANSMITTED IN ANY FORM OR BY ANY MEANS WITHOUT THE WRITTEN PERMISSION OF "ProBUILT Homes"	ProBUILT Homes 20 INDUSTRIAL CIRCLE; MIFFLINTOWN, PA 17059 PHONE # (717) 436 - 6434 / FAX # (717) 436 - 6431
		DRAWN BY: MMS DATE: SCALE: NTS SALESMAN:						BUILDER:		

ELEVATIONS CONTAIN AVAILABLE OPTIONS

LEFT SIDE ELEVATION



REV#	DATE	REVISIONS	BY

DRAWN BY:	DATE:	SCALE:	SALESMAN:
MMS		NTS	

CUSTOMER/PROJECT:
AMELIA

BUILDER:

THIS DOCUMENT AND THE SUBJECT MATTER CONTAINED HEREIN IS NOT TO BE REPRODUCED OR TRANSMITTED IN ANY FORM OR BY ANY MEANS WITHOUT THE WRITTEN PERMISSION OF "ProBuilt Homes"

COPYRIGHT © 2005

ProBuilt Homes

20 INDUSTRIAL CIRCLE; MIFFLINTOWN, PA 17059
PHONE # (717) 436 - 6434 / FAX # (717) 436 - 6431

FILE: 32 AMELIA
SQ.FT.: 1808
STATE:
TYPE: TWO STORY
MODEL: AMELIA
DRAWING: EXTERIOR ELEVATION
SHEET: 2A