

NOTES:

1. 2x6 SPF#2 EXT. WALLS @ 16" O.C. / 2x4 SPF#2 MARR. WALLS
2. 8'-0" CLG HT.
3. 2x10 SPF#2 FLOORJOISTS @ 16" O.C.
4. ROOF SYSTEM TO BE 16" O.C.
5. MW DOUBLE HUNG WINDOWS (NFRS CERTIFIED)

ProBuilt Homes

20 INDUSTRIAL CIRCLE, MIFFLINTOWN, PA 17059
 PHONE # (717) 436 - 6434 / FAX # (717) 436 - 6431

COPYRIGHT © 2004

THIS DOCUMENT AND THE SUBJECT MATTER CONTAINED HEREIN IS PROPRIETARY, AND MAY NOT BE REPRODUCED WITHOUT THE WRITTEN PERMISSION OF "ProBuilt Homes"

CUSTOMER/PROJECT:
MANCHESTER

BUILDER:

REV#	DATE	REVISIONS	BY	SALESMAN:

DRAWN BY: DATE: SCALE: BC

FILE:

SQ.FT.: 1808

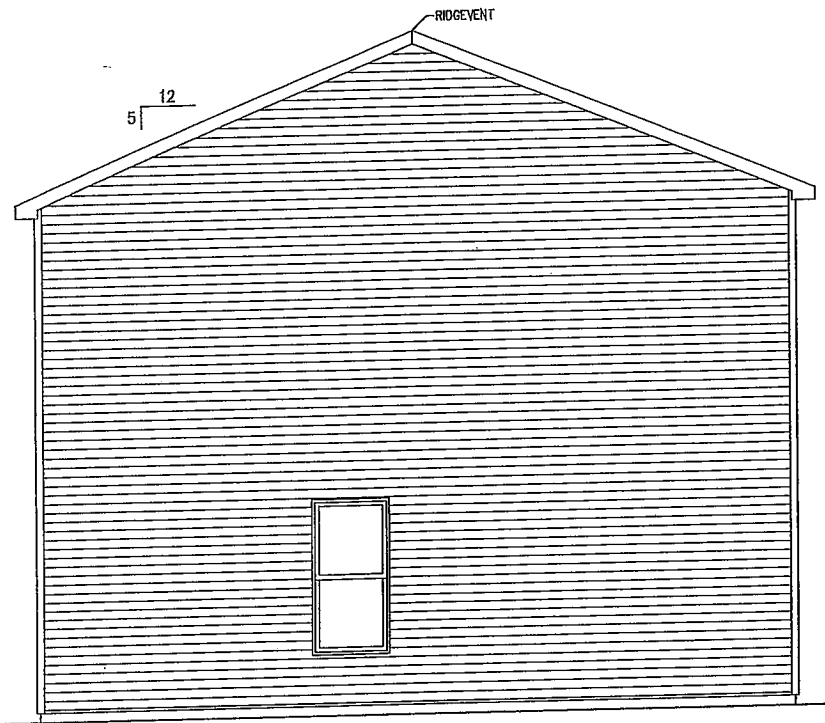
STATE:

TYPE:

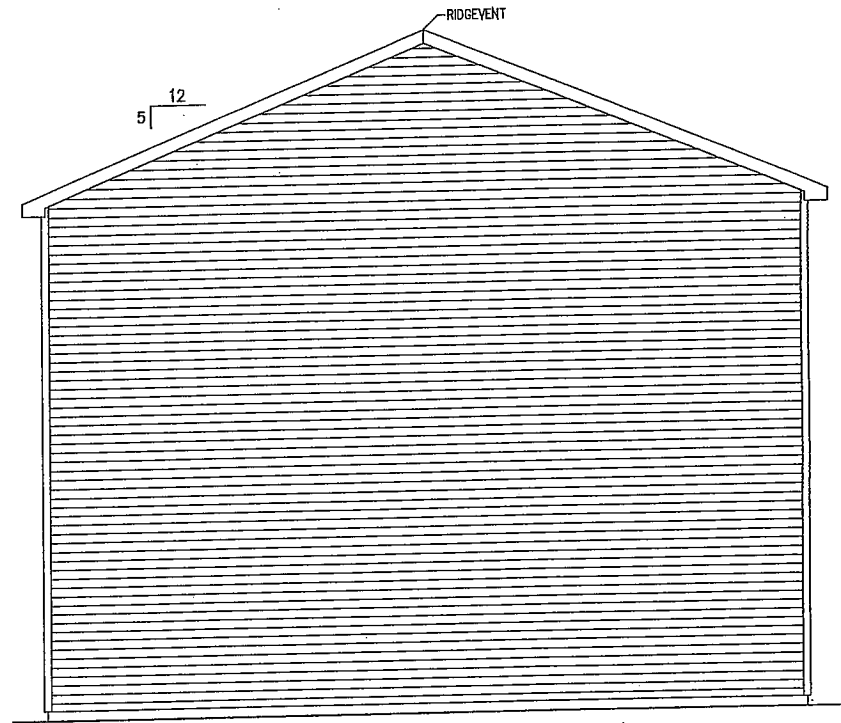
MODEL:

DRAWING:
 2ND FLOOR
 PLAN LAYOUT

SHEET: **3B**



LEFT SIDE ELEVATION



RIGHT SIDE ELEVATION

ProBuilt Homes

20 INDUSTRIAL CIRCLE, MILFINGTON, PA 17059
 PHONE # (717) 436 - 6434 / FAX # (717) 436 - 6431

COPYRIGHT © 2004

THIS DOCUMENT AND THE SUBJECT MATTER CONTAINED HEREIN IS PROPRIETARY, AND MAY NOT BE REPRODUCED WITHOUT THE WRITTEN PERMISSION OF "ProBuilt Homes"

CUSTOMER/PROJECT: MANCHESTER
 BUILDER:

REV#	DATE	REVISIONS	BY	SALESMAN:

DRAWN BY: DATE: SCALE: BC

FILE:
 SQ.FT.: 1696
 STATE:
 TYPE:
 MODEL:
 DRAWING: EXTERIOR ELEVATION
 SHEET: 2C